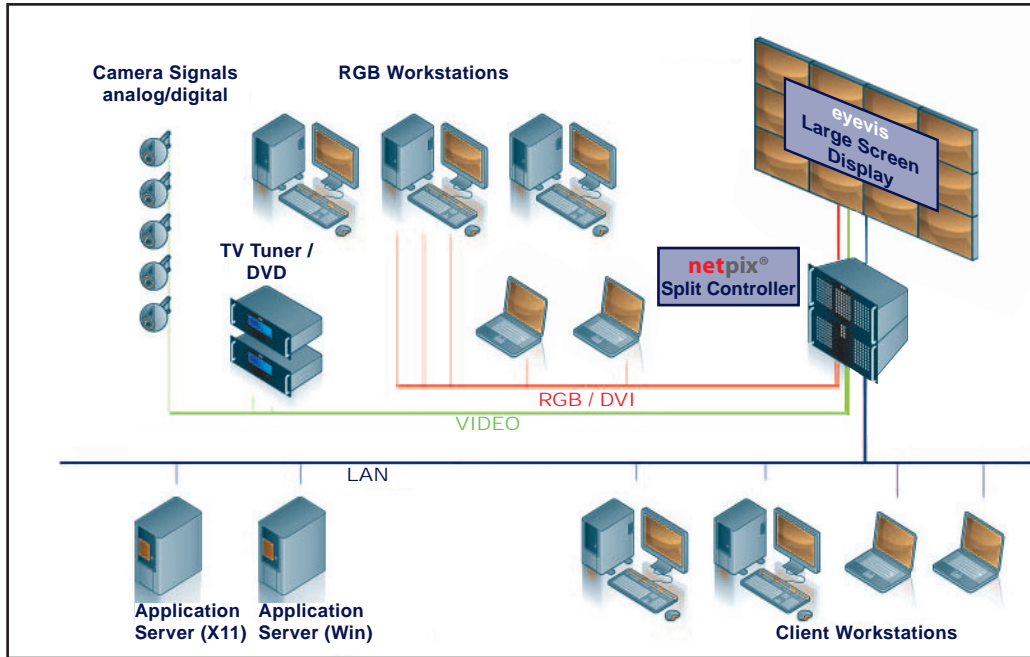


) netpix[®] 3000L

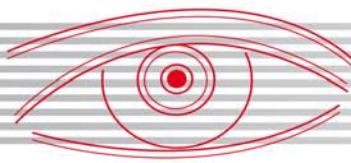


netpix 3000L is a network based graphic controller for the management of large screen displays or single projectors. Through its MultiScreen-ability any display surfaces can be realized. The controller creates a large joined desktop for network-applications, video and graphic sources. At the heart of the NPX 3000L works the most powerful INTEL[®] XEON[®] QUAD CORE CPU architecture of any display processor in its class. The NPX 3000L Controller offers an ultra high performance bus, 64Bit technology and the world's first 512-bit graphic CPU.



These new technologies guarantee the revolutionary and powerful performance of the NPX 3000L in any control room application.

The NPX 3000L provides multiple analog and digital video and graphic connectivity with input cards. Through the new NPX High-Speed-Interconnect-Bus (NPX-HSIB), video and graphic sources can be displayed simultaneously on the display wall. All analog and digital Video and RGB/DVI data is transmitted with 1GByte/s without any dependencies on the system.

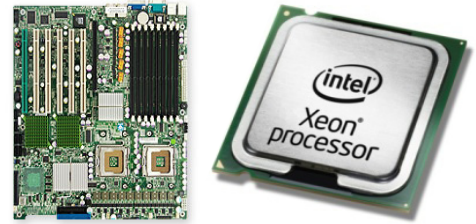


) netpix[®] 3000L

System Architektur

The new NPX Controllers from the 3000 Series are based on the new Intel[®] XEON[®] Quad Core Technology CPUs. This new CPU generation provides better performance for the display of high-end visualisation applications compared to other systems.

- QUAD CORE Intel Xeon Processor with up to 2.5 GHz (8 cores)
- High-end server components for highest availability
- PCI-X 64bit/100MHz bus with 800MB/s
- 2GB EEC RAM
- DUAL Gigabit Ethernet



System Availability

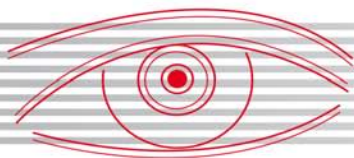
- Redundant power supply units, hot swappable
- New AirFlow technology with 6 hot swappable fans
- Redundant SATA hard disc drives with RAID1, hot swappable
- Disk Imaging and Disaster Recovery, in the event of a system or disk crash, security attack or other fatal failure you can restore your entire controller within minutes - no reinstallation is required
- The NPX 3000L is built in accordance with eyevis ISO 9001 registered facility to meet the specific requirements of each customer and is the best controller for standard control rooms with high availability.

Desktop Management & Operating System

Because of its MultiScreen-ability, any data and application signals can be displayed simultaneously; they can also be positioned and resized freely. The operator has a big desktop with a very high resolution at his disposal, which will be multiplied by the size of the wall.

- Windows[®] XP PRO 32/64 BIT and WIN2003 Server support
- Up to 32GB RAM inside the systems reserved for RAM intensive applications
- Huge Windows desktop with up to 32000x32000 pixel depending on the size of the system
- Standard Windows[®] & X11 applications and SCADA software can be displayed on the wall without any restrictions
- Windows[®]-based applications can be displayed simultaneously with any other input signals like video and RGB/DVI.





) netpix[®]3000L

Input Signal Processing

The NPX3000L controller can be equipped with various input cards for video and graphic integration. Analog/digital video and RGB windows can be moved, scaled and placed freely on the display wall.

- The input cards provide state-of-the-art video processing resulting in superb quality

Analog Video Inputs

- Up to 4 video signals in one system
- Up to 4 video windows can be displayed with every display output
- Composite BNC or S-Video (Y/C)

RGB Inputs

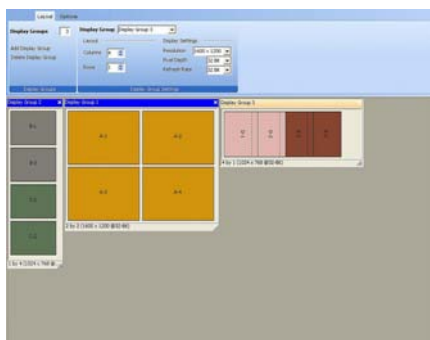
- Display of the source output in a freely moveable, scalable and placeable window on the display wall
- Up to 1 RGB input sources
- Supports input resolutions up to 1280 x 1024 pixels



Output Graphics Processing

The new 512-Bit GPU with 256-bit DDR memory-interface and 64MB per output channel achieves a never seen graphic performance.

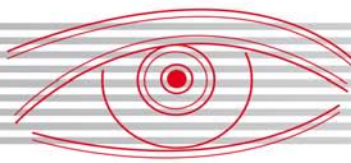
- Analog and digital outputs up to 1400 x 1050pixels
- Configurations up to 4 output channels possible
- Multiple resolution modes for different output resolutions at the same time, with none rectangle adjustment*
- Live preview support for each source inside the eyecon wall management software system*
- Underlapping mode for narrow bezel displays*
- Overlapping mode for edge overlapping projections
- Pivot mode for landscape and portrait display and display output cloning



WALLMANAGEMENT SOFTWARE

For an easy management of large screen displays, we recommend to combine the eyecon wall management software with the NPX 3000L controller. With this software, especially developed for large screen displays, the user has nearly unlimited possibilities for the management and operation of his display wall.





) netpix[®] 3000L

Technical Specifications:

Processor:	Supports up to two Intel [®] Xeon [®] 64-bit Processors Intel [®] Xeon [®] Quad-Core Processor E5420 with 2.5 GHz (optional with up to 8 cores)
Chipset:	Intel [®] 5000P (Blackford) Chipset
RAM:	2GB EEC RAM (expandable up to 32GB)
Expansion slots:	2 x 64-bit/PCI-X
NPX-Bus:	Independent 1 GByte Bus (Point to Point) for the transmission of video and data signals
Harddisc:	SATA 3.0Gbps, HotSwap removable 74GB, SATA 10.000upm (Optional: 74 GB, RAID1 HotSwap, optionally expandable up to 1 TB)
Disc storage:	DVD Recorder with Image und Recovery Software
Ethernet:	2 x Standard integrated 10/100/1000 Mbps RJ45 Ports
Power supply:	100-240 V, 50-60Hz, 650 Watt, Optional: Redundant, HotSwap 760Watt
Accessories:	104-key keyboard; mouse with 2-buttons + wheel/button, optional: extension up to 50m; DVI cables for eyevis Cubes (Fibre optic) for distances up to 100m
Dimensions (HxWxD):	17.7 cm x 42.35 cm x 67.0 cm
Weight:	26.5 kg kg
Operating conditions:	Temperature: 0°C – 40°C (32°F – 104°F) Humidity: 10 – 90% non-condensing Altitude: Up to 3,048.0m (10,000 feet)
Operating System:	Windows [®] XP PRO 32/64Bit Edition, Win2003 Server 32/64Bit

NPX Graphic Card NPX3000L - Out 4

Graphics memory:	512 / 256 MB SGRAM per graphics controller, 4 outputs per card
Wall Configuration:	Any rectangular or non-rectangular* array up to 4 display modules
Resolution:	640 x 480 to 1400 x 1050 pixels per output
Colour depth:	8/16/32 Bit
GPU:	512Bit GPU
Output signal:	DVI-I connector (both analog and digital, DVI-I to HD15 adapters included)

Video Input Card NPX3000L - V4

Inputs:	4 x Composite or S-video BNC connectors
Input format:	NTSC, PAL, SECAM
Decoder:	High quality video decoder with adaptive comb-filter and de-interlacing
Scaling and display:	Display of multiple video sources in any size, everywhere on the wall. Up to 4 video windows per display channel. Control of colour, brightness, contrast

RGB Input Card NPX3000L - R1

Inputs:	1 x HD15
Processors:	real-time RGB with full refresh; integrated quad scaler
Format:	RGB with any Sync type (Composite, separate H and V syncs)
Resolutions:	Up to 1280 x 1024 pixels
Pixel format:	Samples and displays at 16 or 24 bits per pixel
Scaling and display:	Display of multiple sources up to any size, everywhere on the wall. Up to 1 RGB windows per display channel. Control of colour, brightness, contrast.

*available from quarter 4/2008

Windows and Windows XP are registered trademarks of the Microsoft Corporation in the United States and other countries.
Intel and XEON are registered trademarks of the Intel Corporation in the United States and other countries.

**eyevis GmbH**

In Laisen 76 • 72766 Reutlingen • Germany
Tel.: + 49 (0) 7121 43303 - 0 • Fax: + 49 (0) 7121 43303 - 22
www.eyevis.de • info@eyevis.de

As at: August 2008 • Subject to technical change without prior notice!
Copyright © 2008 eyevis GmbH. All rights reserved.