



# ) eyecon® V4

Wall Management Software

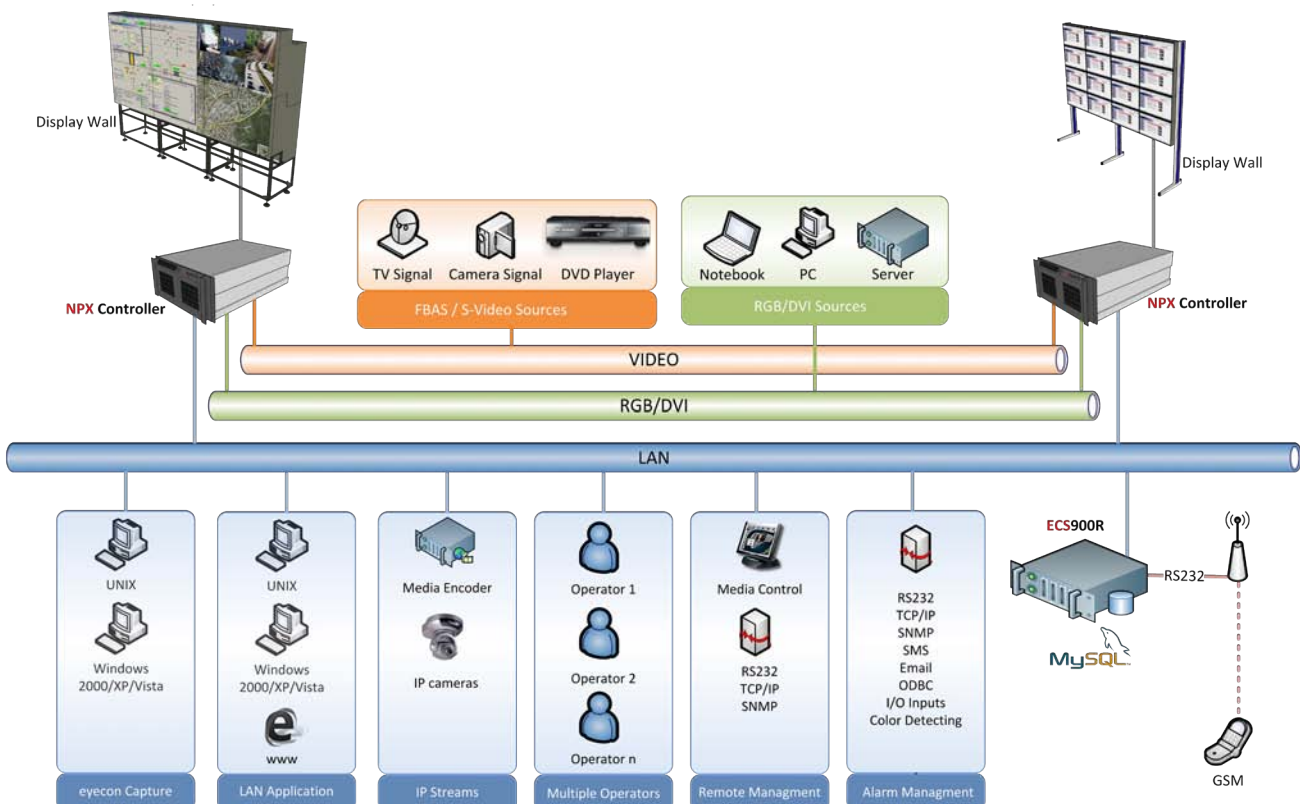
## ) DESCRIPTION

eyecon is a complete software solution for the simple control of your large screen system and all connected signal sources. The eyecon software solution makes your surveillance system even more efficient and available. It remarkably reduces the time between incoming messages and alarms from your system and your reaction. The fourth generation of the system comes with a newly developed graphical user-interface and numerous new features, such as live source preview and optimised IP stream integration.

The eyecon software does not interfere with existing software applications. Alarm messages from your system and management tools, SCADA or DCS systems can be easily displayed on your large screen wall. The images can be displayed in any size to give a comprehensive survey of the scenario to all operators in the control room (single point of view). The only requirements for the use of the eyecon software are two hardware components, a graphic controller (netpix) and an operating controller (ECS).

The netpix graphic controller is a computer with several slots for graphic input cards (video, DVI, RGB, IP Video) and graphic output cards (DVI or RGB). This computer controls the position and size of the various images and creates a combined desktop surface on your large screen wall. The ECS is a computer with a MySQL data base. This device is responsible for the intelligent control of the netpix controller. Your computers can be connected directly to the netpix controller. It is also possible to install your applications directly on the netpix itself to start there without any detours. Other signals, such as video sources can also be connected to the netpix. If you want to transmit the image signals from the displaying computers via the LAN/WAN network, you will need the optional ClientCapture module. The eyecon software is available in three versions, LITE, BASIC and PREMIUM. For the BASIC and PREMIUM versions there are various optional up-grade modules available.

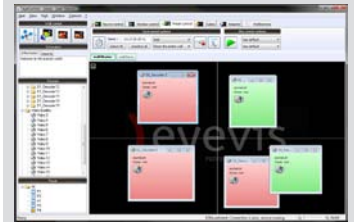
## ) SYSTEM OVERVIEW



## Wall Management Software

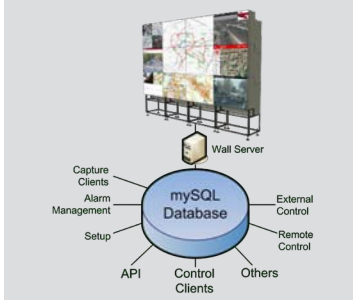
### ) EYECON CONTROL CLIENT

- Simple integration of clients
- All client information are stored on the data base
- Transmission of display content in the entire network
- Drag & Drop surface
- Live-Preview of all network sources and physical sources
- Preview of all presets and simple definition and launching
- Offline mode for simple configuration and definition of layouts
- Enables efficient operation of several large screen walls (MutipleWalls)
- Time-scheduled control of all presets with the integrated scheduler
- Supports large screen displays with different resolutions (MultiResolution)
- Allows working with all connected sources and client systems in the network
- Comfortable tools like "Snap to Grid", "Snap to Wall" or "Snap to Window" and "Window cloning"
- Control over keyboard and mouse from every connected display controller or client
- eyeSidebar for simple control and integrated software-based KVM solution



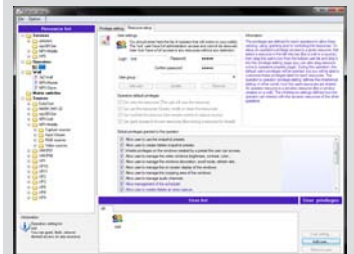
### ) EYECON SERVER

- Central data base (mysql)
- Client server architecture
- Simple, intuitive central configuration
- Full redundancy features with replications (mysql 5)
- Simple backup and disaster recovery (automatic/time-scheduled)
- Control mechanism and event reports via email, SMS, TCP/IP
- Full API support with TCP/IP, RS232, ODBC connectors, HTML/PHP
- Automatic detection of network sources and clients
- Unequalled modular design for simple upgrades



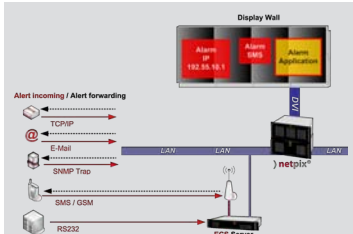
### ) NEW GRAPHICAL USER INTERFACE

- Modular design of all components
- Drag & Drop technology
- Simple operation and only short training time necessary
- Simple maintenance and installation on all clients through to net.Installer
- Unlimited number of operators can use eyecon software on local workstations
- Rights, user levels, or areas on the large screen wall can be defined for every operator



### ) UNIQUE ALARM MANAGEMENT

- Definition of macros for complex predefined processes
- Colour/Motion detection of network sources
- Audio-visual display of alarms and events
- Transmission of alarm reports to other systems
- Simple integration via TCP/IP, ODBC, RS232 and all common network protocols

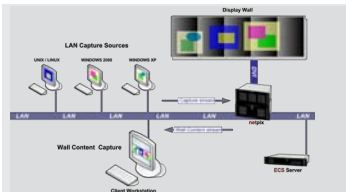


# ) EYECON

) eyevis UK Ltd  
PERFECT VISUAL SOLUTIONS

## Wall Management Software

### ) CAPTURE



The eyecon capture function was developed for the visualisation of the desktop contents of all connected work stations on the large screen display. Its intelligent performance enables the joint administration and display of an endless number of clients via LAN, even if they are using different operating systems – simply with mouse and keyboard. With special eStreamer-boxes it is possible to connect additional computers without installing software on them, to guarantee for a complete safety backup.

### ) EYECON DISPLAY SERVER



- All resources can be started simultaneously and dynamically displayed and administered
- Free positioning and scaling of all sources
- Cropping and zooming for all capture sources, as well as for video, RGB/DVI and IP streaming
- Multiple cropping for individual sources
- Manual definition of coordinates and snap-to-grid functions enable the precise positioning of all sources
- Control of the wall desktop with the local keyboard and mouse of the operator workstations
- Definition of presets with several functions, such as "Replace", "Hide", "Add" and advanced clean commands
- Scaling, freezing and cropping of displayed content with MultiCropping technology
- Provides control of the large screen wall projectors and status reports for every projector
- The eStreamer solution (eyecon capture streamer) transmits RGB or DVI signals over the existing IP network

### ) INTEGRATION

- The MySQL data bank of the eyecon system facilitates the communication with any other system
- API interface opens the complete control of the eyecon software for any management system
- Simple and individual adjustment of the interface for every project
- Supports WINDOWS®, UNIX® & LINUX®
- Bi-directional display, independent from the operating system
- Optional possibility for recording, replaying, fast forwarding and time-shifting from all workstation with recorder function.
- Module for installing redundant systems with doubled networks

### ) CLIENT / CAPTURE HARDWARE REQUIREMENTS



- **Operating System:** Windows XP® (x86, x64), 2003 Server® (x86, x64), VISTA® (x86, x64)\*, 2008 Server® (x86, x64)
- **Workstation:** Minimum Intel® P4 3GHz with 1GB RAM
- **Network:** 100/1000Mbit
- **Server Hardware Requirements:**
  - **Operating System:** Windows XP®, 2003 Server®, 2008 Server® (32Bit/64Bit)
  - **Processor:** Intel® XEON® 3GHz CPU

## Wall Management Software

### ) EYECON VERSIONS & MODULES

eyecon Lite Standard Modules	eyecon Basic Standard Modules	eyecon Premium Standard Modules
<b>3 User licenses</b> (for simultaneous use)	<b>5 User licenses</b> (for simultaneous use)	<b>Unlimited User license</b> (simultaneous use)
<b>Shortcut Manager &amp; Scheduler</b>	<b>Shortcut Manager &amp; Scheduler</b>	<b>Shortcut Manager &amp; Scheduler</b>
<b>API Support</b> RS232, TCP/IP, ODBC	<b>API Support</b> RS232, TCP/IP, ODBC	<b>API Support</b> RS232, TCP/IP, ODBC
	<b>eyecon LAN Remote</b> Wall Mouse & Keyboard control from Client stations	<b>eyecon LAN Remote</b> Wall Mouse & Keyboard control from Client stations
	<b>eyecon Reporter</b> Error Messages over eMail or TCP/IP, RS232	<b>eyecon Reporter</b> Error Messages over eMail or TCP/IP, RS232
	<b>WebControl</b> HTML/PHP API Support	<b>WebControl</b> HTML/PHP API Support
	<b>NoneSquareLayouts*</b> with Multiresolution & Pivot function for NPX3x00 Range	<b>NoneSquareLayouts*</b> with Multiresolution & Pivot function for NPX3x00 Range
	<b>eyecon Basic Optional Modules</b>	<b>Alarm Management</b>
	<b>User license unlimited</b>	<ul style="list-style-type: none"> <li>• ColorDetection</li> <li>• SNMP</li> <li>• SMS incl. GSM Hardware</li> <li>• I/O Inputs incl. Hardware</li> <li>• Macro / Alias Support / Alarm Definition Creator</li> </ul>
	<b>eyecon Redundancy*</b> for 2x Database and 2x NPX Controller incl. Networkboard for Cubes & LCD	<b>eyecon Capture unlimited</b>
	<b>eyecon Capture unlimited</b>	<b>eStreamer Support</b>
	<b>eStreamer Support</b>	<b>MultiWalls unlimited</b>
	<b>MultiWalls unlimited</b>	<b>MultiCropping</b>
	<b>MultiCropping</b> for Video, IP streams, RGB/DVI	<b>MultiCropping</b> for Video, IP streams, RGB/DVI
	<b>eyecon SideBar</b> incl. KVM and Control	<b>eyecon SideBar</b> incl. KVM and Control
	<b>Alarm Management</b>	<b>eyecon Premium Optional Modules</b>
	<ul style="list-style-type: none"> <li>• ColorDetection</li> <li>• SNMP</li> <li>• SMS incl. GSM Hardware</li> <li>• I/O Inputs incl. Hardware</li> <li>• Macro / Alias Support / Alarm Definition Creator</li> </ul>	<b>eyecon Recorder unlimited</b> to record and playback of Capture client content
	<b>eyecon Recorder unlimited</b> to record and playback of Capture client content	<b>eyecon Redundancy*</b> for 2x Database and 2x NPX Controller incl. Networkboard for Cubes & LCD

\*) integration planned Q2/2009